



COMPANY GUIDE



LUCK

Driving the future of logistics

SERVICE

## CORPORATE PHILOSOPHY



# Delivering the feelings that the maker puts into their products without fading.

Today, in this town and that town, various people are working hard and sweating to pursue their dreams and to earn a living, and various products are born. Also, each person buys these products in pursuit of wealth, and customer needs increase, and manufacturers develop and supply new products with even more creativity to meet that demand.

In such a rich and ordinary daily life, logistics is the bridge that connects manufacturers (shippers) and users. We do not just transport goods, but we have a deep understanding of the importance of logistics, which can be said to be a "lifeline" in today's society, and we believe that our "mission" is to deliver the "feelings" that the makers (manufacturers) put into their products without fading, and to satisfy the satisfaction of the end user.

Each employee interacts with customers with the "awareness and sense of responsibility" of the person who carries out the activity, and with the "heart to understand the other person's feelings," and we believe that our happiness is to be able to take the joy of manufacturers and users and be grateful for it.

Our company name, "Luck Service," represents "Good Luck," our wish for the happiness of the people we live with in this ever-changing era, and was chosen with the hope of being a company that provides "Good Service" that continues to contribute to the local community.

## W Shinka 「Evolution and deepening」

We are always inquisitive and pursue  
two evolutions and deepening.

01

quality

We aim to improve our technology and services by adopting new ideas to adapt to the changing times.

02

challenge

We will raise the issue ourselves and continue to make efforts to solve it step by step.

03

flexible

We learn every day to develop the ability to make quick decisions and respond flexibly to all needs.

04

confidence

Through our daily work, we cultivate the knowledge and mindset to live honestly and with integrity.

05

thanks

We aim to foster a spirit of gratitude that allows children to feel happy and grateful for the ordinary things in their daily lives.

06

peace of mind

We will create a stable life for our employees and a rewarding workplace.

# BUSINESS INTRODUCTION

## ／ CARGO HANDLING BUSINESS ／

A "cargo handling business" is a transportation business that handles everything from cargo collection to delivery using the most appropriate means of land, sea and air transportation, whether domestic or international, based on a transportation contract with the shipper.

A freight handling business enters into a transportation contract with the shipper and transports the shipper's cargo using shipping services operated by other transportation businesses, including ships (ocean and coastal), air (domestic and international), rail and automobile transportation. The transportation responsibility to the shipper is borne by the freight handling business, not by other transportation businesses.



# GOOD LOGISTICS SOLUTION

We will reconstruct optimal logistics with good ideas.

01

### Good Solution

We propose the best logistics solution for you

02

### Good Idea

We will use our unique know-how to find the best plan for you.

03

### Good Relation

We help improve the speed and capabilities of your supply chain through IT solutions.



01

## Good Solution

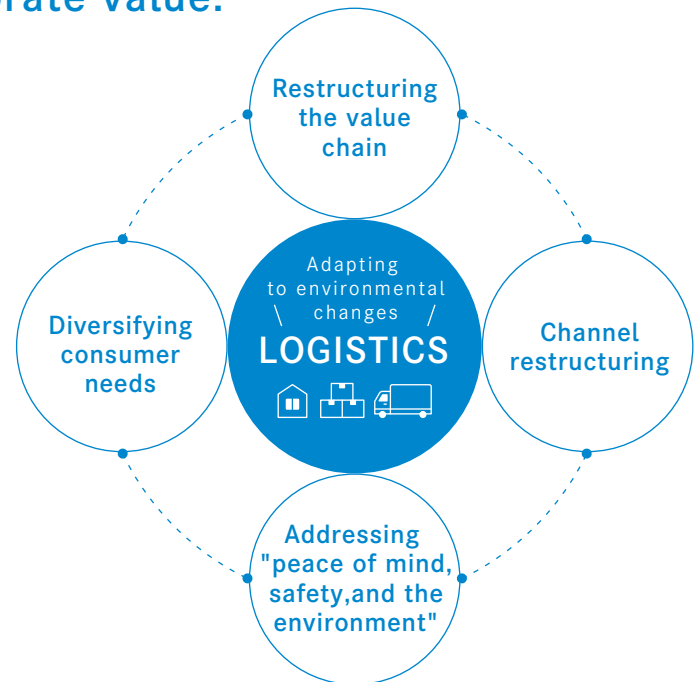
We propose the best logistics solution for our customers.

We provide our customers with a competitive advantage by proposing logistics solutions that adapt to changes in the environment. We strive to maximize corporate value.

Logistics transformation is an important issue for corporate management.

At Rack Services, we have insight into the changes in the business environment and can help our clients with various logistics transformations across the entire range of logistics activities to increase their corporate value.

What should be emphasized regarding "improving service," "reducing costs," and "optimizing inventory" is greatly influenced by changes in the external environment. In order to maintain a competitive advantage in the face of environmental changes, it is essential to reconstruct the value chain, including utilizing external resources, and establish a continuous improvement process.



02

## Good Idea

We will use our unique know-how to come up with the best plan for you.

### A Issue extraction

We research and analyze industry trends to accurately identify current and potential future logistics issues.

### B Formulating a vision for the future

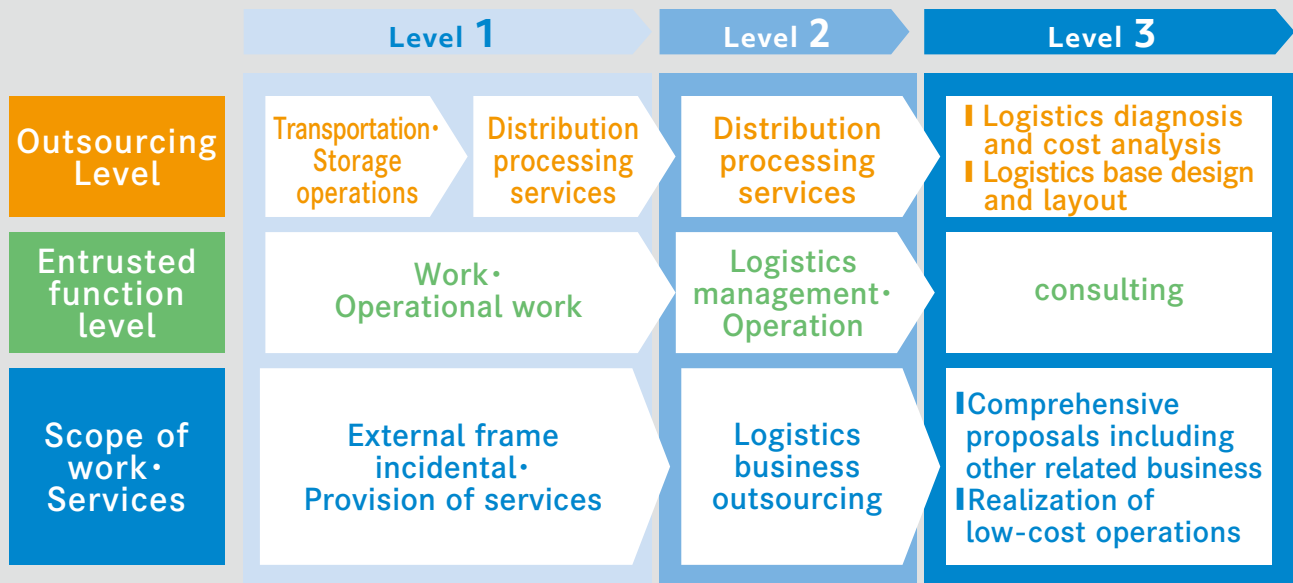
We develop solutions to logistics issues and logistics models that maximize the effects of transformation.

### C Management Transformation

We lead the selection, development and implementation of logistics IT that maximizes speed and visibility to realize an optimal supply chain.



We create improvement plans and reasonable implementation plans based on what the customer "should" do, not what they "want to do."

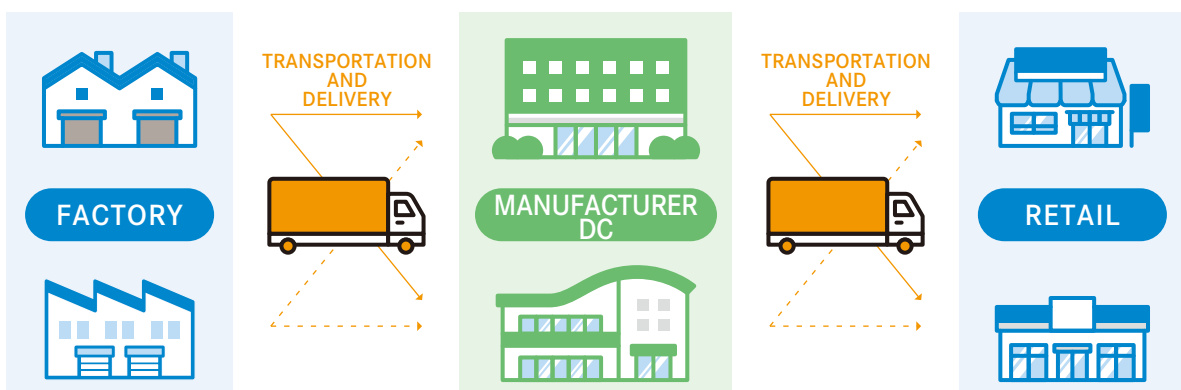


## 03

### Good Relation

We help improve the speed and visibility of your supply chain through IT solutions.

We help you select the optimal tools for transportation management support, supply chain event management, warehouse management, etc., and design, develop, and implement systems that fit your logistics model.



#### Transportation and delivery management support system

Increase speed and visibility of work levels.

#### Supply Chain Management System

Increase visibility and speed across all logistics activities.

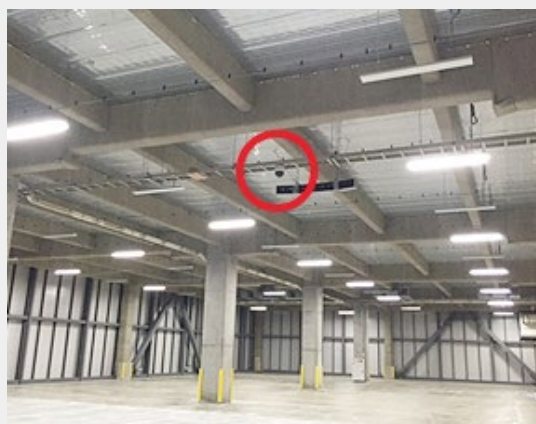
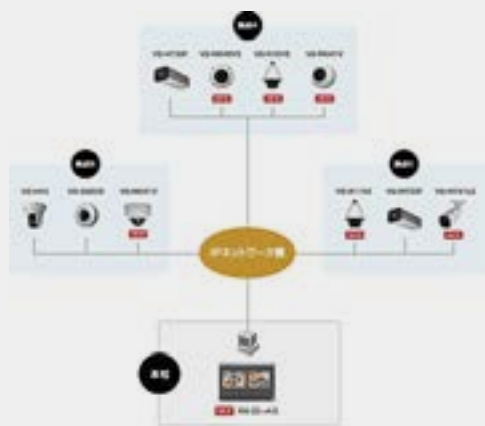
#### Warehouse management support system

By understanding planned and actual inventory in real time, you can improve visibility of allocation scope.

# EQUIPMENT



## Rotating camera for checking luggage statu



- Full 360° rotation possible
  - Best-in-class\* low-light performance
  - Equipped with a 30x optical zoom lens
- ※1.3 megapixel network camera

## "ID Transportation" A smartphone-based vehicle dispatch system



### Automating vehicle dispatch operations

Unlike traditional dispatch systems, this system utilizes the proven track record of GPS.



### Visualization of delivery status

This reduces inquiries from shippers and enables more efficient vehicle dispatch.



### Digitalization of daily operations

The system allows you to complete the delivery receipt on your smartphone screen.

## "ID Warehouse" On-site work using iPads

We design on a shipper basis to suit the product characteristics.

Item×Package×Quantity<sub>(wave)</sub>×Delivery destination

Approximately **5.4 billion**  
possible combinations

# COMPANY HISTORY



May 1988	Established Luck Service Co., Ltd. in Nishi-ku, Nagoya
December 1988	Renamed Luck Service Co., Ltd. and expanded business
March 1994	Opened Obu Sales Office
February 1996	Head office moved to Nishibiwajima Kojo, Kiyosu City, Aichi Prefecture
May 1999	Established Autorack Co., Ltd. (repair shop) in Kiyosu City, Aichi Prefecture (Chubu Regional Transport Bureau designated private vehicle inspection shop)
July 2001	Opened Tombomate distribution center in Nishibiwajima, Kiyosu City, Aichi Prefecture
January 2016	Head office moved to current location (Tanyang-cho, Ichinomiya City, Aichi Prefecture)
November 2020	Relocated Kiyosu Sales Office
August 2020	Opened Kisogawa Sales Office



# COMPANY PROFILE

Company name	Rack Service Co., Ltd.
Head office	109,Tenjo,Itsukaichiba,Tanyo-cho,Ichinomiya-shi,Aichi-ken,491-0823, Japan
TEL	0586-77-8600
FAX	0586-77-6100
Establishment	May 14, 1987
Capital	15 million yen
Representative	Kiyofumi Yamazaki (Japan Association of Logistics Systems, Logistics Management Consultant)
Employees	104 people (including part-timers)
Business type	General cargo vehicle transportation business Cargo trading business Non-life insurance agency business
Business details	Logistics consulting Distribution center operation Newspaper transportation Fixture transportation, installation
Bank	Resona Bank (Osaka Sales Department Branch)・Mitsubishi UFJ Bank (Owari Shinkawa Branch) Nagoya Bank (Biwajima Branch)・Seto Shinkin Bank (Oonoki Branch)
Related organization	Aichi Trucking Association ・ Japan Association of Logistics Systems
Business area	Chubu Region





## VEHICLE

We deliver many packages every day to all 47 prefectures of Japan from our base in Aichi Prefecture. In order to meet a wide range of needs, we have a wide range of vehicles available, from 1 to 13 tons in size.

13t vehicle	9 units
8t vehicle	8 units
4t vehicle	22 units
2t vehicle	24 units
Route van	4 units
Forklift	33 units

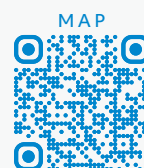


## SALES OFFICE / REPAIR SHOP



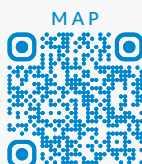
### Kiyosu Sales Office

109, Ochiai, Kasuga, Kiyosu-Shi, Aichi-Ken,  
452-0961, Japan



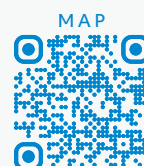
### Kisogawa Sales Office

2F, 207-1, Hachino St., Kisogawacho Kuroda,  
Ichinomiya-Shi, Aichi-Ken, 493-0001, Japan  
TEL:0586-52-2181/FAX:0586-52-2182



### Obu Sales Office

3-45, Hitotsuyacho, Obu-Shi, Aichi-Ken,  
474-0055, Japan  
TEL:0562-47-8228/FAX:0562-46-2062



### Autorack Ltd. (repair shop)

179-1, Kaiduka, Asahi, Kiyosu-Shi, Aichi-Ken,  
452-0932, Japan  
TEL:052-401-4700/FAX:052-401-4701

